

Environmental

Envirocare HillMaster

A Range of Package Pump Systems for Residential & Commercial Developments



Sustainable, Reliable, Affordable



Kingspan[®]

Envirocare Pump-Pac

Pump-Pac pumping systems are suitable for applications where foul drainage by gravity is not possible, including:

- Domestic sewage pumping
- Effluent pumpsets for sewage treatment plants
- Surface water pumping systems
- Septic tank pumpsets
- 24 hour pumped storage chambers
- Bespoke systems

Features

- Complete package systems delivered direct to site
- Ready for immediate and simple installation
- Factory built and quality assured
- Maintenance free GRP and polyethylene chambers
- High-level alarm fitted as standard
- Full Envirocare after sales maintenance available
- All Envirocare products are manufactured under the quality procedures of BS ISO 9001: 2000

Design

All standard Envirocare package pump systems are supplied with GRP/polyethylene chambers, pump(s), high-level alarm, pre-set automatic level control, non-return valve, discharge pipe and all connections. Units are supplied with pre-benched bottoms.

Options

- Wide range of emergency overflow tanks
- 110mm or 160mm inlet connections
- Various invert depths and positions
- Standby replacement pumps
- Internal pipework in plastic, galv or cast iron
- Kiosks with warning beacons
- Telemetry systems

Bespoke Systems

Envirocare manufactures pumping chambers of various diameter and depths, with pumps, guide rails and control equipment fitted as per the client's specification. Please contact us direct and we will be pleased to quote against your specific requirements.

Delivery and Installation

Units are normally delivered by flat bed vehicle and crange facilities should be available on-site for off loading. Installation is quick and economical, the unit requiring only a concrete base and surround.

Comprehensive installation instructions are supplied with every unit.

Advice

The information in this sales literature is, by necessity, brief. For more detailed technical literature and drawings regarding applications, installation, maintenance or specific options, please contact Envirocare. We have both internal and field sales staff who will be pleased to assist.

Maintenance

Envirocare package pump systems are designed for minimum maintenance.

Envirocare offers a full after sales service involving planned maintenance visits.

Legal Requirements

Prior to installation, there is a legal requirement to obtain permission from the appropriate agencies (including connection to a public sewer).



Pump-Pac

The **Pump-Pac** range offers a competitive solution to the pumping requirements of both domestic and industrial applications. Often it can be preferable to keep civil work and installation costs down to a minimum but such economy should not mean any shortfall in quality.

The 1.0m diameter units are manufactured in tough polyethylene using advanced rotational-moulding technology, while the 1.25, 1.8 and 2.6m diameter units are made from maintenance-free GRP. All units are engineered with the highest quality parts and fittings.

- High-level alarm as standard (optional as marked *)
- Various invert depths
- Internal lifting chains and guiderails** (as specified)
- Wide range of pump options including macerators/solids handling/vortex
- Pedestrian/vehicle covers

** Please note, guiderails are not standard fitment on effluent pumpsets unless specified.



	1.0m x 2.0m Rotomoulded	1.0m x 2.5m Rotomoulded	1.25m x 2.0m GRP	1.25m x 3.0m GRP	1.25m x 3.5m GRP	1.8m x 4.0m GRP
SINGLE PUMP	✓	✓	✓	✓	✓	✓
TWIN PUMP	✓	✓	✓	✓	✓	✓
SINGLE PUMP	✓	✓	✓	✓	✓	✓
TWIN PUMP	✓	✓	✓	✓	✓	✓
SINGLE PUMP	✓*	✓*	✓	✓	✓	✓
TWIN PUMP	✓	✓	✓	✓	✓	✓

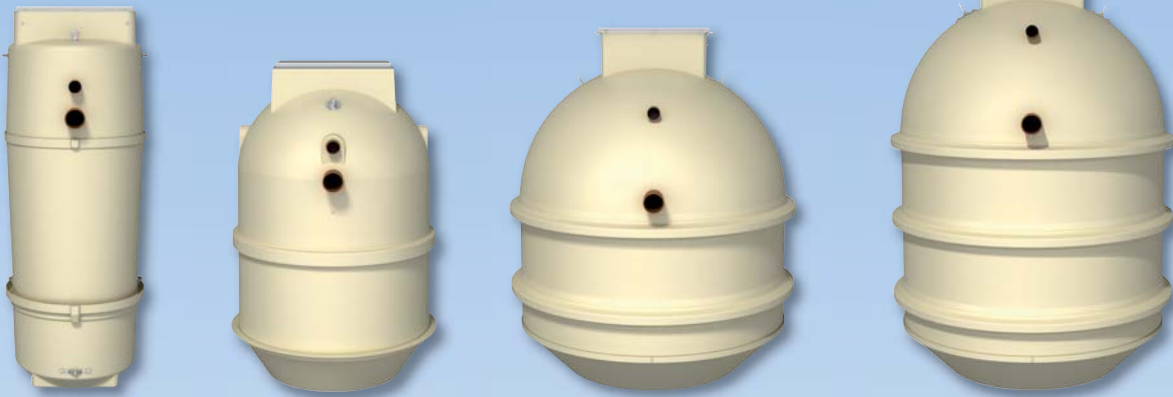
✓ Represents standard models. ✓ Represents special order models. * Optional High-level alarm.

Pump-Pac24

The **Pump-Pac24** range has been specifically designed to meet the requirements of municipal agencies. These requirements recognise the need for pump stations to have a 24hr storage capacity in case of a disruption in service (such as a power failure).

This comprehensive range offers an advanced solution to larger domestic and industrial applications. For large capacity flows (such as stormwater run-off from hard-standing areas), **Pumpstore** stations are available in a comprehensive range of sizes.

- High-level alarm fitted as standard
- Various invert depths
- Internal lifting chains and guiderails fitted as standard
- Wide range of pump options including macerators/solids handling/vortex
- Combined chamber capacity up to 90,000 litres
- Pumping distances up to 1000 metres
- Pedestrian/vehicle covers
- Kiosks with warning beacons (option)
- Telemetry systems (option)



1.25m x 3.5m GRP	1.8m x 3.0m GRP	2.6m x 3.3m GRP	2.6m x 4.0m GRP
✓	✓	✓	✓
✓	✓	✓	✓
✓	✓	✓	✓
✓	✓	✓	✓

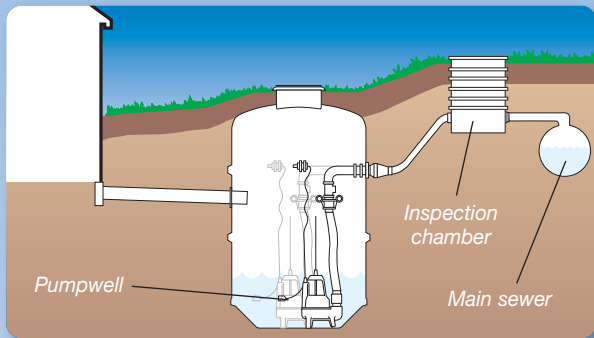
Need a larger pumping system?
 Our Pumpstore range goes up to 75,000+ litres. Ask for a brochure.

✓ Represents standard models. ✓ Represents special order models.

Domestic Sewage Pumpsets

If the main sewer is accessible but at a higher level to (or some distance from) the domestic foul drain, then a domestic sewage pumpset may be used to pump unsettled sewage directly to the main.

Whilst single pump units are acceptable for individual houses, it is recommended that twin pumping systems be used for multiple dwellings.



Key Points to Consider

Firstly, don't worry. Klargester have a team of pump experts on hand to advise you on the correct product for your site. All we need from you is information on key factors such as:

- Application: e.g., domestic residential / commercial
- Sewage, effluent or surface water?
- Inlet depth (below ground level)
- Pumping distance and lift
- Electrical supply

Simply give us a ring or log on to our website to download our **Pump-Pac Enquiry form**. This form will guide you on what measurements you will need and any additional data. Once completed, phone, email, fax or post it back to us and our team will provide you with a solution.

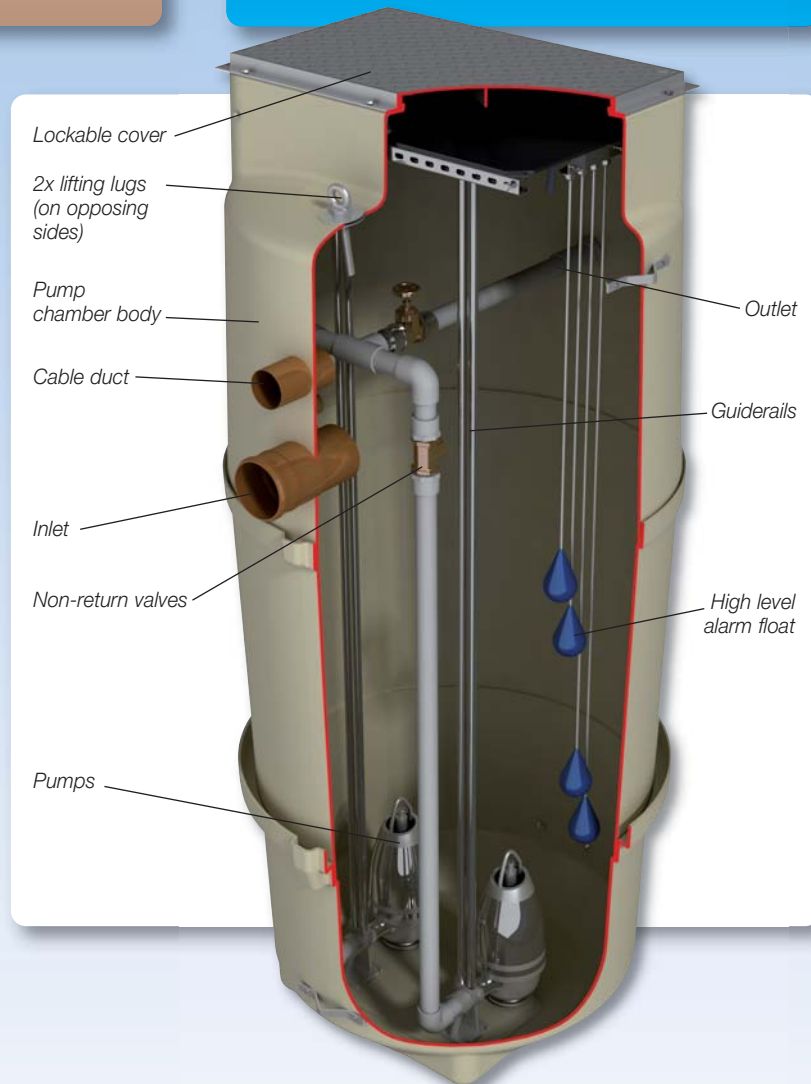
Effluent Pumpsets

A septic tank or treatment system pumpset can be used to disperse settled effluent when a site has a high water table or adverse invert levels. Installed after the septic tank or treatment system and pumping settled effluent up to an inspection chamber, flow to the drainage system then takes place by gravity in the normal way.

Surface Water Pumpsets

Due to the amount of rainwater that can fall in a short time period, Surface water run-off is often the most demanding of all applications, whether hard-standing or roof areas.

Klargester offers a comprehensive range of packaged pump systems in both standard form or manufactured to bespoke specifications. Careful calculation of the run-off areas is essential when sizing these pump systems.



Envirocare Off-Mains Solutions



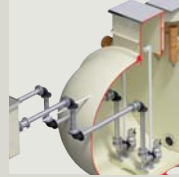
P6 Sewage Treatment Plants



Delta 6 Sewage Treatment Plants



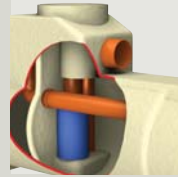
Attenuation Systems



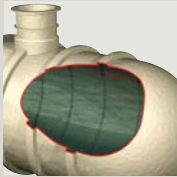
Pumpstore Systems



Pump-Pac Package Pumps



Oil/Water Separators



Below Ground Storage Tanks



Grease Traps



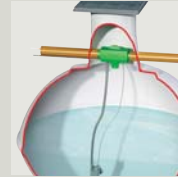
Silt Traps



Reed Beds



Rainwater Harvesting



Garden Irrigation

Kingspan Environmental Service

Who better to look after your wastewater product than the people who designed and built it?

Kingspan Environmental have a dedicated service division providing maintenance for wastewater and rainwater products.

Factory trained engineers are available for site visits as part of a planned maintenance contract or on a one-off call out basis.

To find out more about protecting your investment and ensuring peace of mind, contact us on (NI) 028 302 54077, (IRL) 048 302 54077 or visit us online at www.kingspanenvservice.com



Issue No. 5: September 2010



Envirocare Pollution Control

180 Gilford Road, Portadown, Armagh, BT63 5LF

Lo-Call NI: 0844 225 2775 Lo-Call IRL: 1800 938 388

Tel: +44 (0) 28 3838 4419 Fax: +44 (0) 28 3838 4445
email: sales@envirocare.ie

Visit our website www.envirocare.ie, our company website www.kingspanenv.com, or our group website www.kingspan.com

Envirocare Pollution Control is part of Kingspan Environmental.

